

**CAPTURES
COMPLEX
CONTOURS**



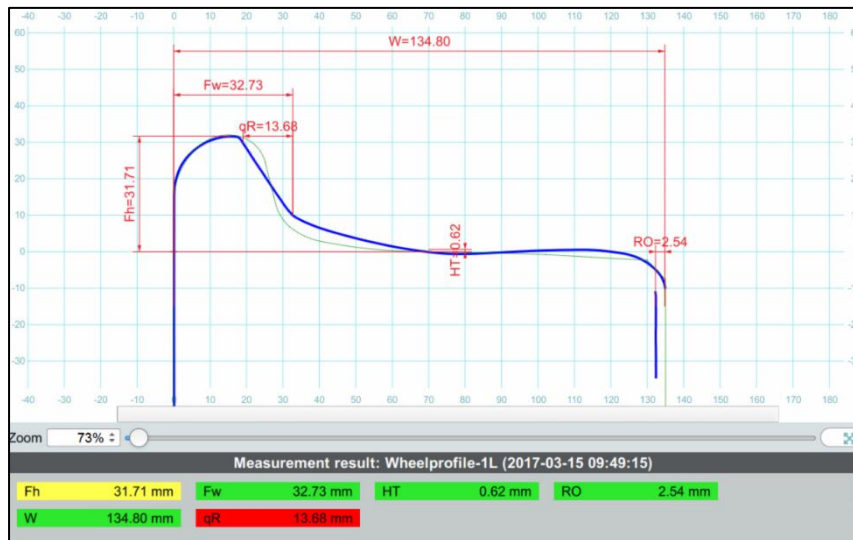
MEASUREMENT MODULE “WHEEL PROFILE“

Data sheet

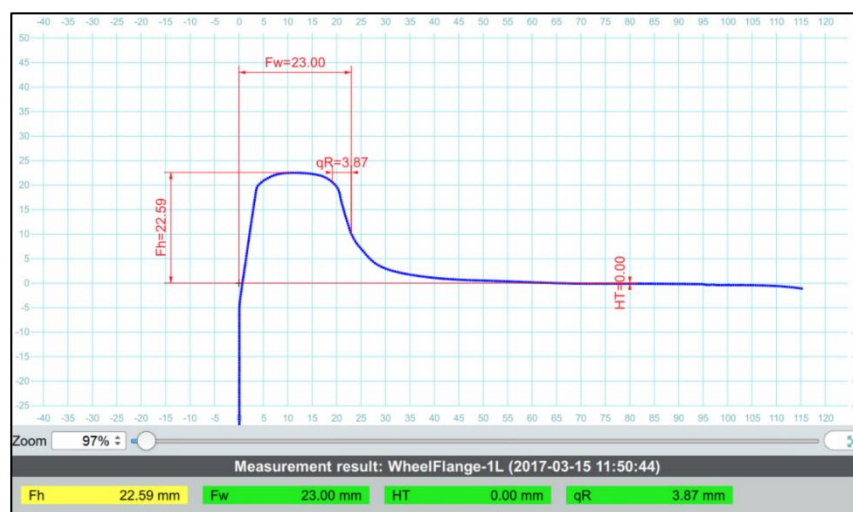
APPLICATION

The “Wheel Profile“ module allows for the precise measurement of an entire wheel profile cross section within a few seconds. Alongside the key wheel flange dimensions (height, width, qR), the wheel width, hollow tread as well as the rollover are determined. The “Wheel Profile“ module can be applied for all common heavy as well as light rail wheels. The magnetic supporting gauge “BR 600“ is used to measure heavily worn rails and is included in this module offering. Mounted on the unworn area of the inner wheel side, the gauge ensures ensure the correct alignment of the data. All of the measured variables are displayed on the sensor and tablet PC within a few seconds. These results can then be compared automatically with your reference values.

MEASURED VARIABLES:



MEASUREMENT METHOD “WHEELPROFILE“



MEASUREMENT METHOD “WHEELFLANGE“

TECHNICAL DATA

Compatibility	CALIPRI C40, CALIPRI C41, CALIPRI C42
Accuracy	Absolute accuracy: <math>< \pm 80 \mu\text{m}</math> Repeatability: <math>< \pm 35 \mu\text{m}</math>
Scope of application	For all common heavy and light rail wheel profiles
Standards & Certificates	Calipri is approved and uses i.a. in Germany (DB), Austria (ÖBB), Switzerland (SBB), France (SNCF), China (Chengdu Railway Bureau) and the Czech Republic (SŽDC). This measuring module has been successfully tested according to JCGM100: 2008, DIN V ENV 13005: 1999-06, DIN EN 13715: 2001-01, DIN EN 15313: 2016-09 and DIN 27201-9: 2017-06.
Product ID	CMM1001

SCOPE OF DELIVERY

- ✓ Software license measurement module “Wheel Profile“
 - 2 measurement methods (WheelProfile, WheelFlange)
 - In case of supplementary order: activation via remote access
- ✓ Supporting gauge “BR 600“
 - Magnetic gauge for heavily worn wheels



SUPPORTING GAUGE “BR 600“

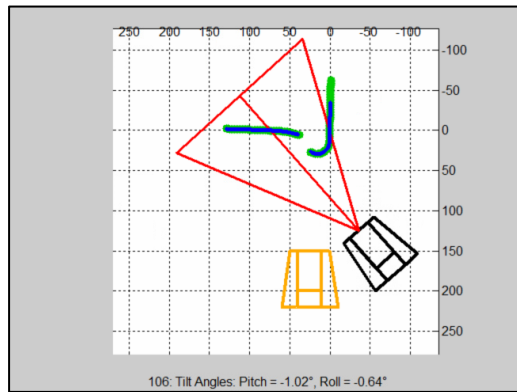
ADD-ONS:

- + Measurement module “Wheel Diameter“
 - Measurement of rolling circle diameter
 - Product ID: CMM1005
- + Measurement module “Tyre Thickness“
 - Measurement of railway wheel thickness
 - Product ID: CMM1003
- + Measurement module “Equivalent Conicity“
 - Measurement of running properties (rail-wheel-contact)
 - Product ID: CMM1011
- + Measurement module “Wheelshop“
 - Measurement of optimal cutting depth for the wheel set machining
 - Product ID: CMM1010

MEASUREMENT PROCESS



MEASUREMENT

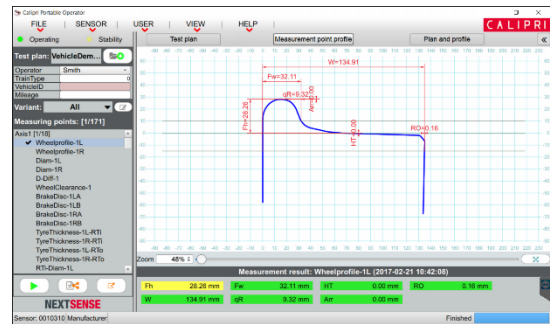


SENSOR GUIDANCE (TUTOR)



MEASUREMENT RESULT ON SENSOR

AND



MEASUREMENT RESULT ON TABLET PC

Offer & Live demonstrations:
sales@nextsense-worldwide.com